

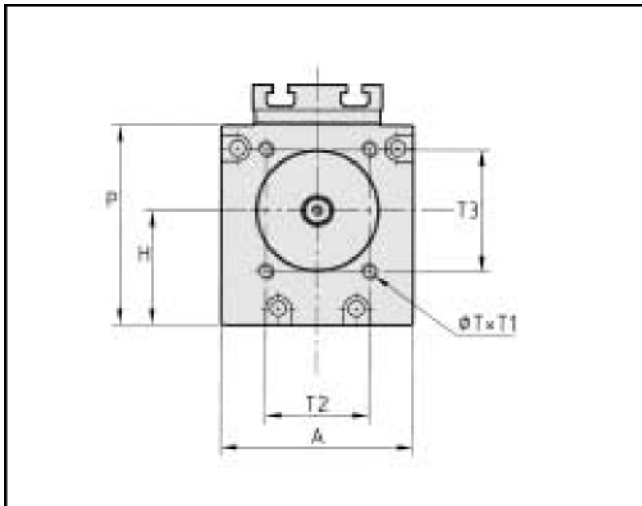
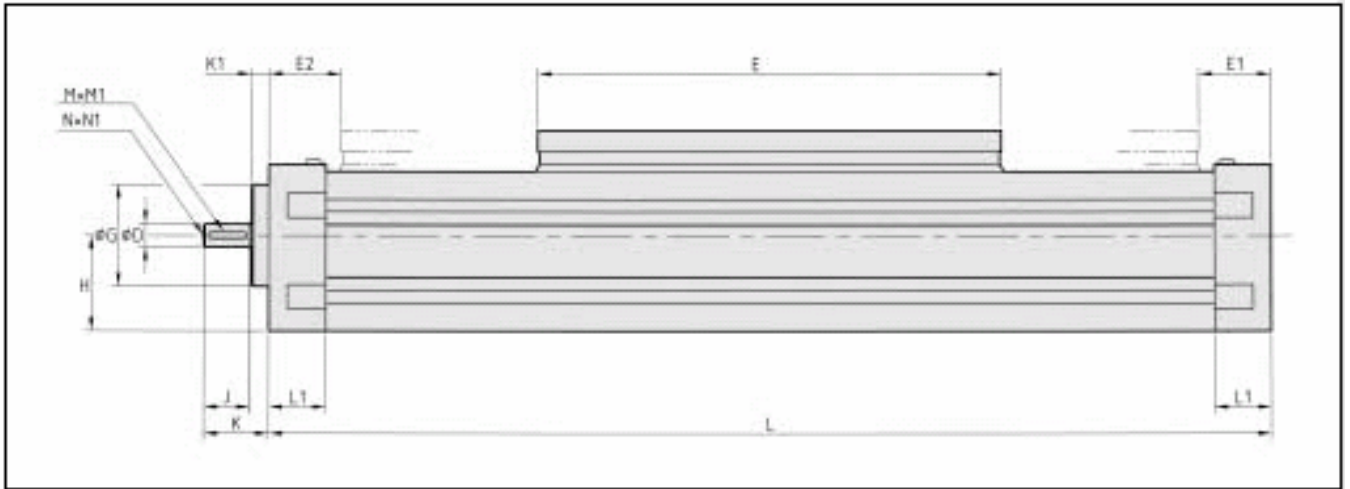


MLK / LINEK SERIES

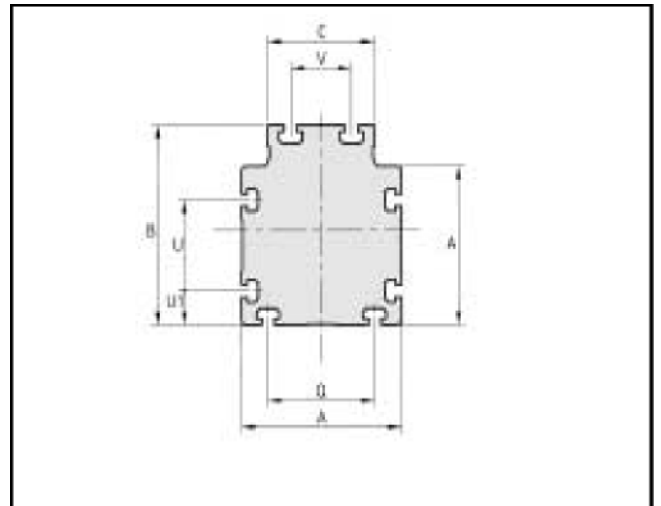
International designation: KMLK / KLIN

- Ball screw or trapezoidal screw drive
- Profile rail guide with 2 carriages (MLK)
- Polyamide guide (LINEK)

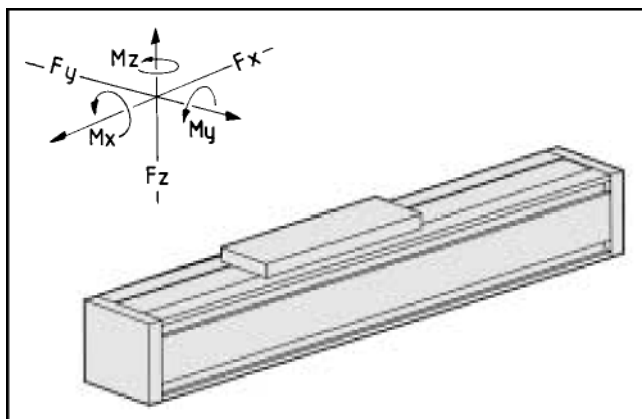
- Profile made of anodized extruded aluminium
- Bearing for the ball screw
 - 2 pre-loaded angular ball bearings
 - 1 deep groove ball bearing
- T-slots
- Optimal sealing
- Screw supports



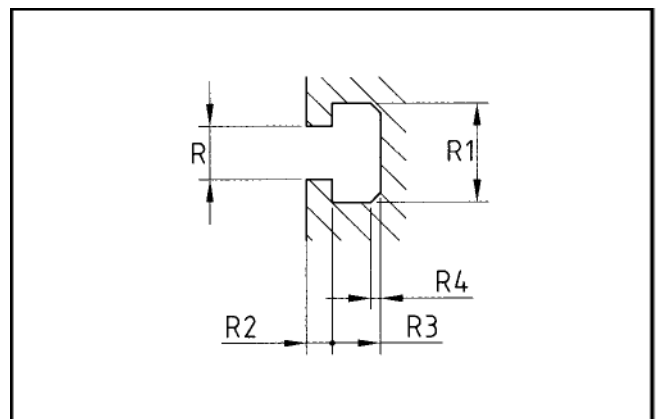
Front view



Cross section



Forces and moments



T-slots

DIMENSIONS (mm)

Series	Max. stroke	A	B	C	ØDh7	E		E1	E2	ØGf7
MLK 15 LINEK 80	4,250	80	107	56	12	250	360 ⁽¹⁾	45+0.5 LSI	95 + 0.5 LSI	62
MLK 25 LINEK 105	3,950	105	132	70	15	300	450 ⁽¹⁾	45 + 0.5 LSI	45 + 0.5 LSI	67

Series	H	J	K	K1	LSI ⁽²⁾		L1	M	M1	N	N1	P	Q
					2SI	4SI							
MLK 15 LINEK 80	48	30	52	19	60	120	37	4	25	M4	16	85	50
MLK 25 LINEK 105	63	30	43	11	60	120	37	5	25	M5	20	110	70

Series	R	R1	R2	R3	R4	ØT	T1	T2	T3	U	U1	V
MLK 15 LINEK 80	6	12.5	4	6.2	2 x 2	M6	15	40	60	45	17.5	34
MLK 25 LINEK 105	8	15.5	4.3	6.2	2.5 x 2.5	M8	18	56	67	60	22.5	40

(1) Long carriage (ref. XXL)

(2) L SI = Length of the spindle supports, without spindle supports L SI = 0

TECHNICAL DATA

Series	Total weight	Weight of carriage	Moment of inertia		Module of elasticity
	Kg		Kg	Iyy (mm ⁴)	
MLK 15	Stroke x 0.011 + 6.4	2	201 x 10 ⁴	172 x 10 ⁴	70,000
MLK 25	Stroke x 0.018 + 12.4	4.4	532 x 10 ⁴	464 x 10 ⁴	70,000
LINEK 80	Stroke x 0.0085 + 5.7	1.9	201 x 10 ⁴	172 x 10 ⁴	70,000
LINEK 105	Stroke x 0.0135 + 10.3	3.7	532 x 10 ⁴	464 x 10 ⁴	70,000

TECHNICAL DATA OF THE GUIDING MECHANISMS

PROFILE RAIL GUIDE					
Series	Size	Load capacity		Statical moment (Nm)	
		C (N)	Co (N)	Mox	Moy/Moz
MLK 15	15	10,600	18,400	146	1,123
MLK 25	25	26,350	41,800	506	3,800

POLYAMIDE GUIDE					
Series	Load Capacity (N)			Statical moment (Nm)	
	Fx	Fy	Fz	Mox	Moy/Moz
LINEK 80	3,100	4,100	3,300	228	470
LINEK 105	3,600	6,800	3,300	490	962

REPEATABILITY :

MLK: ± 0.05mm with a ball screw

LINEK: ± 0.20mm with a ball screw

ACCELERATION:

MLK: 15m/s²

LINEK: 10m/s²

SPEED:

Speed is limited by the critical speed of the screw shaft which is dependent on screw length and quantity of screw supports. See opposite diagrams.

LUBRICATION:

The guiding mechanisms and the drive are to be re-lubricated at least twice a year by using the NLGI 2 roller bearing grease fitted with lithium based soap.

TEMPERATURE:

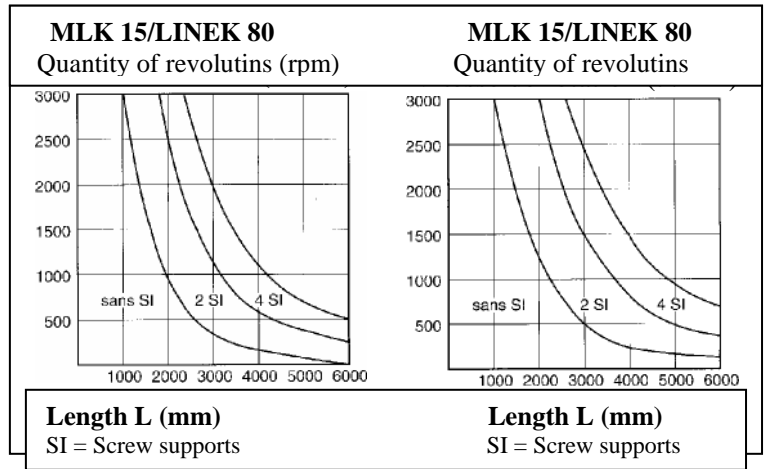
From -10°C to +80°C

Other temperatures, please contact us.

Combination options				
Series	Screw ⁽¹⁾	Version		L+K max
		VB	TR	
MLK 15 LINEK 80	20 x 5	•		5,500
	20 x 20	•		5,500
	20 x 50		•	3,000
	20 x 4		•	3,000
MLK 25 LINEK 105	25 x 5	•		5,600
	25 x 10	•		5,600
	25 x 25	•		5,600
	24 x 5		•	3,000

VB = Ball screw TR = Trapezoidal screw

(1) Other leads on request



Maximum rotational speed of the ball screw = 1800rpm
 Maximum rotational speed of the trapezoidal screw = 1200 rpm
 Higher speed on request

Ball screw Ø x lead (mm)	Load capacity (N)	
	Dynamic C	Static Co
Ø20 x 5	11,700	24,400
Ø20 x 20	9,000	19,100
Ø20 x 50	7,900	19,000
Ø25 x 5	15,600	37,800
Ø25 x 10	20,800	43,900
Ø25 x 25	13,700	22,100

REFERENCES

	MLK 25	2505 VB	1000 / 1450	2SI	A10	A15
Series						
Ø / lead / type of screw						
Stroke / total length (mm)						
Quantity of screw supports						
Options and accessories (ex. A10: flange; A15: coupling)						