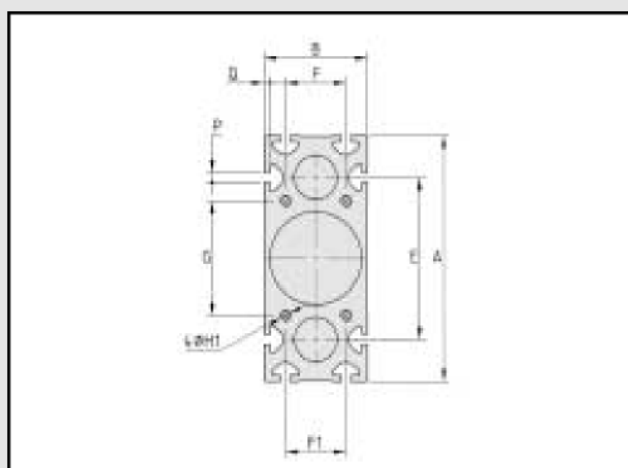
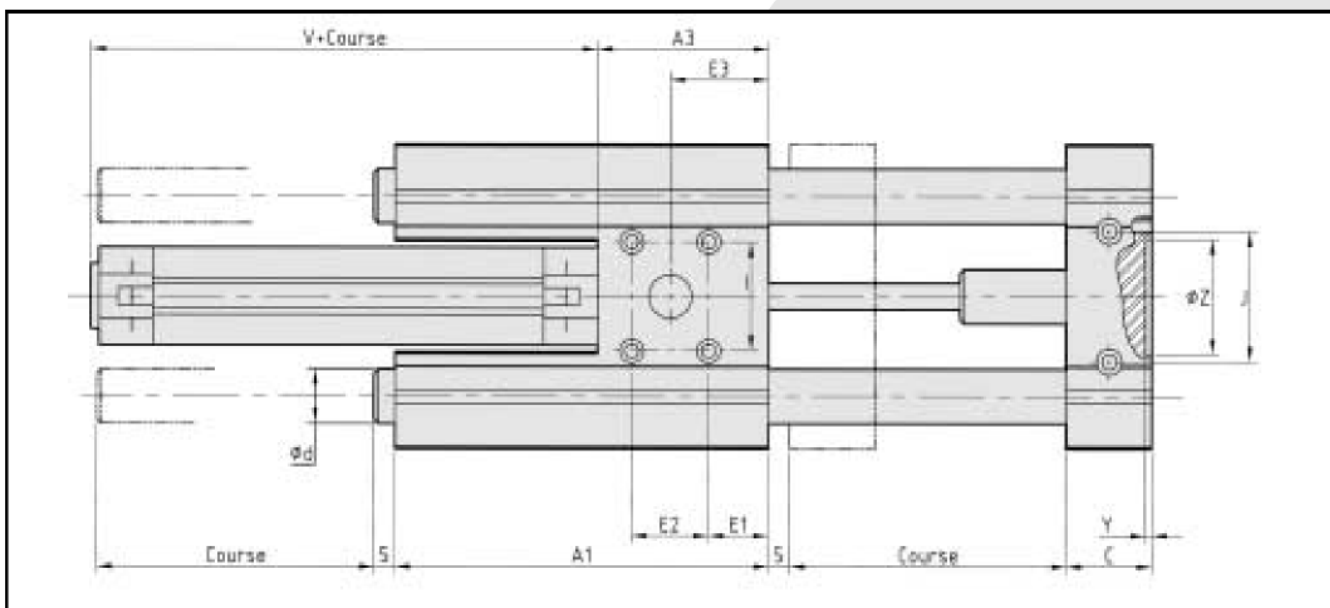
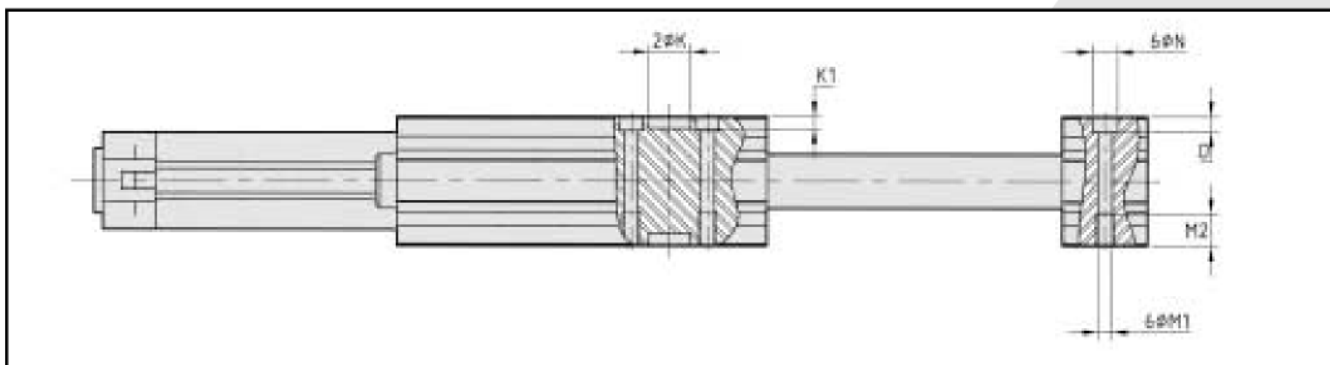


- Massive table made of anodised extruded aluminium
- Guide on 4 linear bearings
- Pneumatic cylinder drive
- Cylinder $d=25$ according to ISO 6432
- Cylinder $d=32, 40, 50, 63$ and 80 according to VDMA 24562 and ISO 6431
- End-blocs and table equipped with:
 - 8 T-slots
 - Monting holes



PNEUMATIC ACTUATOR "KAP"

| Dimensions (mm) | | KAP 100 | | KAP 140 | | KAP 165 | | KAP 200 | | KAP 230 | |
|---------------------------------------|------------|-----------------|----|-----------------|----|-----------------|----|-----------------|----|-----------------|----|
| d H6: linear bearings | | 16 | | 25 | | 30 | | 30 | | 40 | |
| Diameter of cylinder | | 25 | | 32 | | 40 | | 50/63 | | 80 | |
| A | | 100 | | 140 | | 165 | | 200 | | 230 | |
| A1 | | 130 | | 175 | | 210 | | 220 | | 220 | |
| A3 | | 60 | | 80 | | 95 | | 100 | | 105 | |
| B | | 46 | | 60 | | 72 | | 79 | | 98 | |
| C | | 35 | | 40 | | 45 | | 46 | | 48 | |
| E | | 66 | | 92 | | 108 | | 136 | | 164 | |
| E1 | | 18 | | 28 | | 30 | | 20 | | 20 | |
| E2 | | 28 | | 36 | | 46 | | 56 | | 60 | |
| E3 | | 32 | | 46 | | 53 | | 48 | | 50 | |
| F (slots) | F1 (holes) | 26 | 26 | 35 | 35 | 42 | 42 | 50 | 44 | 64 | 50 |
| G | | 50 | | 65 | | 80 | | 102 | | 130 | |
| H1 | | M6 | | M6 | | M8 | | M10 | | M12 | |
| I | | 35 | | 50 | | 60 | | 76 | | 100 | |
| J | | 42 | | 60 | | 70 | | 76 | | 100 | |
| K H8 | | 16 | | 20 | | 24 | | 30 | | 30 | |
| K1 | | 4 | | 5 | | 6 | | 6 | | 6 | |
| M1 | | M6 | | M8 | | M8 | | M10 | | M12 | |
| M2 | | 15 | | 20 | | 20 | | 25 | | 25 | |
| N | | 10 | | 12 | | 12 | | 15 | | 18 | |
| O | | 6 | | 7 | | 7 | | 9 | | 11 | |
| P | | 5.2 | | 6.2 | | 8.2 | | 8.2 | | 10.5 | |
| Q | | 3 | | 3.5 | | 4 | | 5 | | 6 | |
| V(length of cylinder) | | 76 | | 94 | | 105 | | 106/121 | | 128 | |
| Y | | 3 | | 3 | | 3 | | 4 | | 5 | |
| Z H8 | | 40 | | 53 | | 63 | | 70 | | 80 | |
| Load capacity (4 linear bearings) | C (N) | 2,015 | | 6,465 | | 9,100 | | 9,100 | | 9,100 | |
| | Co (N) | 2,480 | | 6,680 | | 10,800 | | 10,800 | | 10,800 | |
| Total weight without cylinder (Kg) | | c x 0.012 + 2 | | c x 0.024 + 4.3 | | c x 0.033 + 7.2 | | c x 0.033 + 8.6 | | c x 0.033 + 12 | |
| Weight of the moved mass (Kg) | | c x 0.004 + 0.8 | | c x 0.009 + 1.8 | | c x 0.014 + 3 | | c x 0.014 + 3.9 | | c x 0.014 + 4.6 | |

c = Stroke (mm)

L = Total length (mm)

REFERENCES

| | KAP | 165 / 40 | 200 | 465 | A60 |
|--|-----|----------|-----|-----|-----|
| Series | | | | | |
| Width of the profile / Diameter of cylinder | | | | | |
| Stroke | | | | | |
| Total length | | | | | |
| Options and accessories (ex. A60: slide nut) | | | | | |