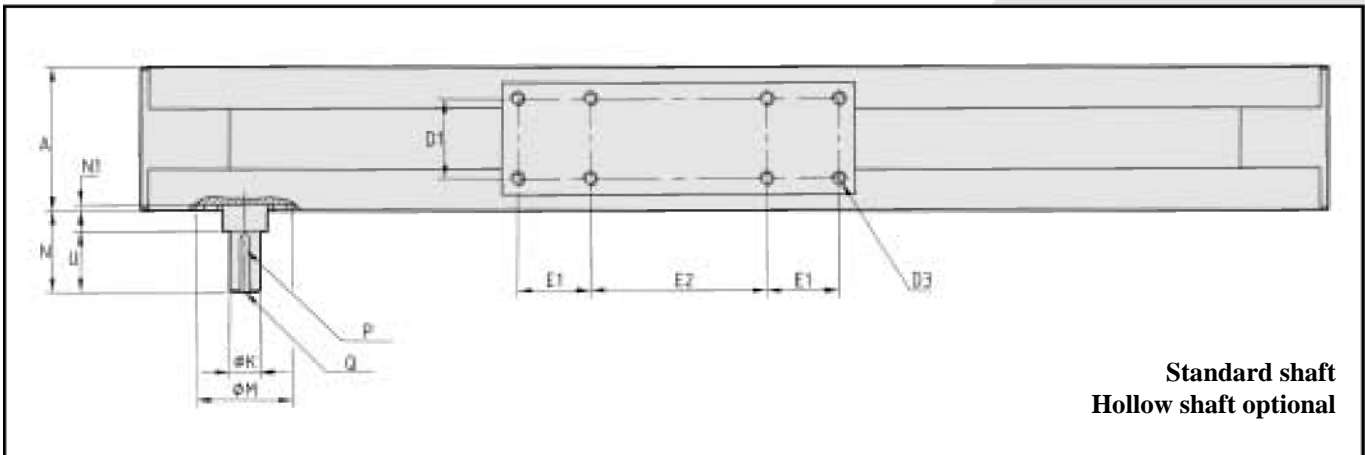
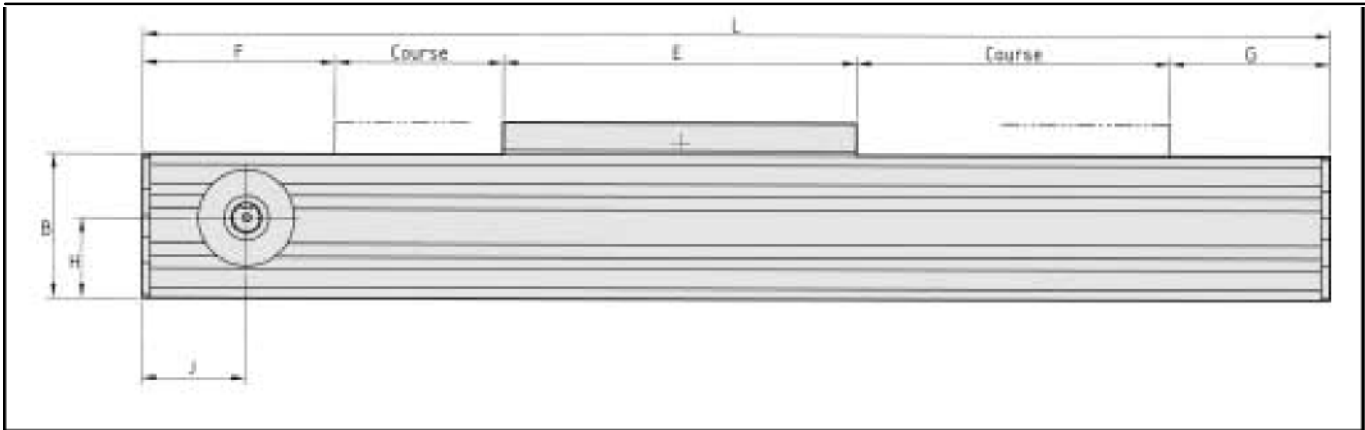


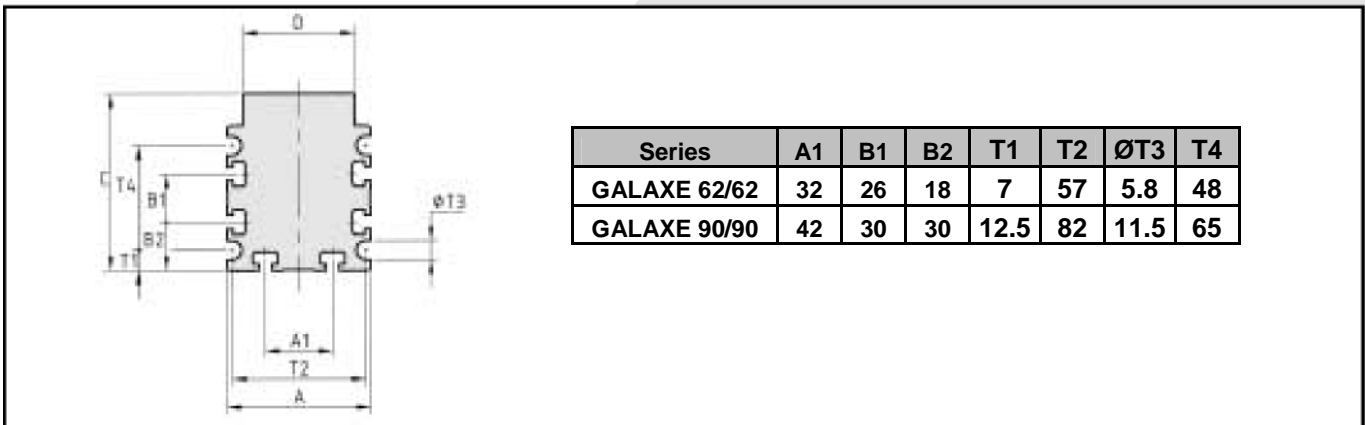
GALAXE SERIES

International name: KGAL

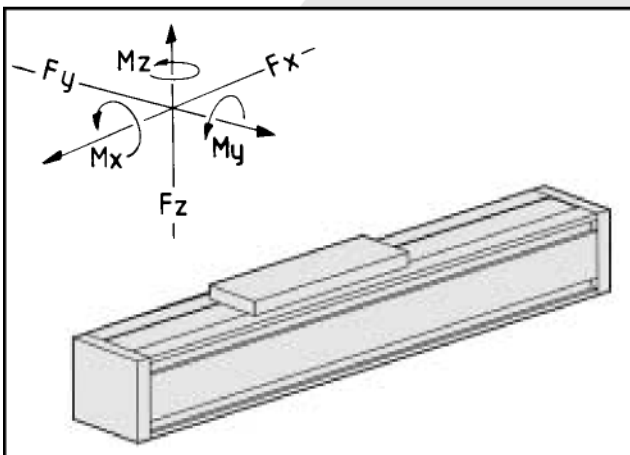
- **Toothed belt drive**
- **Integrated roller guide with 4 or 8 bearings**
 - **Pre-loaded guide factory adjusted (no eccentric)**
 - **Profile made of anodised extruded aluminium**
 - **Maintenance-free unit**
 - **T-slots**



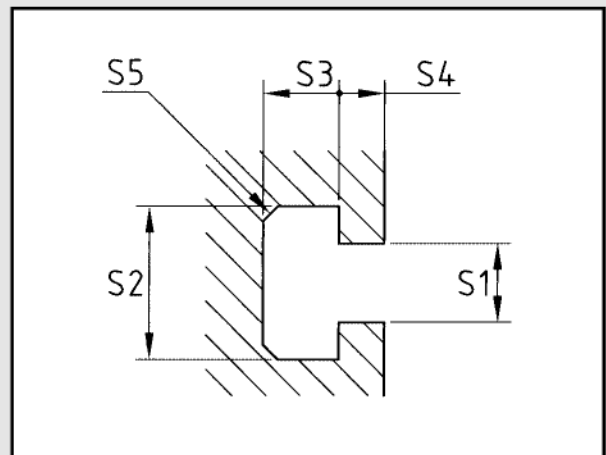
Standard shaft
Hollow shaft optional



Series	A1	B1	B2	T1	T2	ØT3	T4
GALAXE 62/62	32	26	18	7	57	5.8	48
GALAXE 90/90	42	30	30	12.5	82	11.5	65



Forces and moments



T-slots in the profile

DIMENSIONS (mm)

Series	Max. stroke	A	B	C	D	D1	D3	E	E1	E2	F	G	H
GALAXE 62/62	6,670	62	62	76	48	34	8M6	150	30	70	95	80	35
GALAXE 90/90	6,560	90	90	110	70	50	8M8	220	45	110	120	100	50

Series	J	ØK	ØM	N	N1	P	Q	R	R1	R2	R3	R4	U
GALAXE 62/62	50	15	47	38	2.5	5x5	M4/16	6	10.5	3.5	5.5	1 x 1	28
GALAXE 90/90	65	19	68	50	2.5	6 x 6	M5/20	8	15.5	4	7.5	2 x 2	38

LONGER RUNNING CARRIAGES WITH 4 (ref.XL4) OR 8 ROLLERS (ref.XL8)

GALAXE 62/62			GALAXE 90/90		
E = 220	E1 = 40	E2 = 110	E = 350	E1 = 50	E2 = 200

TECHNICAL DATA

Series	Travel per revolution	Toothed belt	Total weight	Weight of carriage
	mm		Kg	Kg
GALAXE 62/62	140	25 AT 5	Stroke x 0.007 + 2.9	0.7
GALAXE 90/90	200	50 AT 5	Stroke x 0.012 + 8.5	2.3

Series	Pulley mass moment of inertia	Moment of inertia		Module of elasticity
		Kg.m ²	Iyy (mm ⁴)	
GALAXE 62/62	9.73 x 10 ⁻⁵	64.57 x 10 ⁴	78.04 x 10 ⁴	70,000
GALAXE 90/90	7.32 x 10 ⁻⁴	239.38 x 10 ⁴	297.44 x 10 ⁴	70,000

TECHNICAL DATA FOR THE GUIDE

Series	Permissible load for 4 rollers (N)*			Static moment (Nm)		
	Fx dyn.	Fy	Fz	Mox	Moy	Moz
GALAXE 62/62	597	600	800	40	85	78
GALAXE 90/90	1,140	1,500	2,600	135	220	200

* For 8 rollers on request; principally, the permissible loads double.

SPEED:

Up to 7.5m/s

ACCELERATION:

20m/s²

Higher accelerations with factory agreement

REPEATABILITY:

± 0.10mm

LUBRICATION:

Maintenance-free unit

TEMPERATURE :

From -10°C up to +80°C

Other temperatures, please contact us.

SEE "OPTION SAND ACCESSORIES" FOR:

- Second, free carriage
- Long carriage with 4 or 8 rollers
- Double motor shaft
- Hollow shaft coupling
- Compact flange
- Connection
- Stroke ends
- Fixing parts
- Motor
- Motion control...

MOTOR SHAFT POSITION:

See page 14-2.

REFERENCES

	GALAXE 90/90	2000/2440	SAG	CLO	A10C
Series					
Stroke / total length					
Motor shaft position (ex. front left shaft)					
Options and accessories (ex. CLO: hollow shaft coupling; A10C: compact flange)					